

Situation Report #1

This report highlights the Citizens' Disaster Response Center Foundation, Inc.'s (CDRC) emergency response efforts to typhoon Karen (international name: Sarika).



We need volunteers



We need donations

13-16 OCTOBER 2016

OVERVIEW



Track of Typhoon "KAREN" [SARIKA]



OVERALL SITUATION

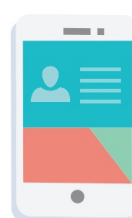
Tropical Depression Karen intensified into a Tropical Storm last October 13, and into a Typhoon by October 14

By 4 am on October 15, the eye of Karen was at 125 km Northeast of Virac, Catanduanes with maximum sustained winds of up to 130 kph near the center and gustiness of up to 180 kph

On October 16 at 4 am, Karen made a landfall over Baler, Aurora

The typhoon is expected to leave the Philippine Area of Responsibility tonight

LEARN MORE



www.cdrc-phil.com

13-16 OCTOBER 2016

EMERGENCY RESPONSE EFFORTS



- Alert for Typhoon Karen sent to the following Regional Centers (Oct 13):



- The Regional Centers likewise alerted their respective areas/communities to prepare or to organize pre-emptive evacuation

- CDRC Emergency Protocol Structure activated (Oct 15); closely monitoring the situation and gathering information from the Regional Centers and other partners

- CDRC Rapid Assessment Team is on stand-by and ready for deployment (Oct 15)Body Text: Double click to edit

- CDRC volunteers mobilized for repacking (Oct 16)

- TABI Rapid Assessment Team deployed to Catanduanes

- ABI Rapid Assessment Teams deployed to North Zambales, Nueva Ecija and Aurora



www.cdrc-phil.com

17-18 OCTOBER 2016

PLANNED RELIEF OPERATIONS



Oct 17, Monday

(Donor: CARE and A-PAD; Partner: ABI)

Where:

Gabalton, Nueva Ecija

Baler, Aurora

Northern Zambales

What:

- 240 food packs
- 240 hygiene kits
- 6 pcs tarpaulin roof for public spaces/schools/evacuation centers, etc.

Oct 18, Tuesday

(Donor: DKH and A-PAD; Partner: ABI)

Where:

Baler, Aurora

What:

- 250 food packs
- 250 NFIs



DONORS



www.cdrc-phil.com

COORDINATION



- Regional Centers:
 - Tarabang para sa Bicol (TABI)
 - Alay Bayan-Luson, Inc. (ABI)
 - Southern Tagalog People's Response Center (STPRC)
 - Cagayan Valley Disaster Response Center (CVDRC)
 - Ilocos Center for Research, Empowerment and Development (ICRED)
 - Cordillera Disaster Response Center (CordisRDS)
- Other networks and organizations:
 - Philippine Disaster Resilience Foundation (PDRF)
 - Disaster Risk Reduction Network Philippines (DRRNet Phils)
- Government agencies:
 - Disaster Response and Management Bureau, Department of Social Welfare and Development