

## Leyte Earthquake 2017

### Situation Report # 1

7 July 2017



*Displaced families in Brgy. Milagro, Ormoc City, Leyte. (photo credit: LCDE)*

### CHRONOLOGICAL SUMMARY

- On 4:03 PM, Philippine time, a 6.5 magnitude earthquake struck the island of Leyte with its epicenter between the boundaries of the town of Jaro and the city of Ormoc.
- Although the town of Jaro was closer to the epicenter, it suffered minimal damage and casualties. There were several landslides reported in upland barangays but most of these occurred in uninhabited areas.
- The adjacent towns of Kananga, Carigara and the city of Ormoc suffered more damage.
- Two fatalities were reported. A 42-year-old man died when a pension house (inn) collapsed in Kananga while an 18-year-old mother was killed in Ormoc City.
- The earthquake occurred at the closing of a regular schoolday. There are reports of widespread panic among schoolchildren in Ormoc, Kananga and Jaro, with minor injuries due to the scuffling and stampede out of the school campuses.

- As of this writing, staff of CDRN regional center Leyte Center for Development (LCDE) are on the field doing Damage, Needs, and Capacities Assessment (DNCA).



*Photo 1. Epicenter of the quake between Jaro and Ormoc, very near Lake Danao and the Amandewin mountain range.*

## CURRENT SITUATION

The latest figures released by the Department of Social Welfare and Development (DSWD) show two deaths and 41 injuries (including an amputation). Additionally, hundreds of schoolchildren have suffered from psychological trauma and require debriefing as soon as possible.

Initial reports from LCDE say that a four-year-old child was one of those trapped when the pension house collapsed in Kananga. Most of them have been pulled out from the rubble and sent to hospitals for treatment. Search and rescue operations are ongoing.

In Barangay Milagro, Ormoc City, the staff noted that **90%** of the houses have collapsed or are not fit for residential use anymore. With aftershocks still occurring, many residents have built makeshift tents on open spaces near their ruined houses. According to the barangay LGU, 673 families have lost their homes. Upon interviewing the displaced families, many told LCDE staff that adjacent barangays have also suffered major damage, which includes Barangays Gaas, Dolores, Tongonan, Cabintan, and Mahayag. In Barangay Danao, where upland Lake Danao sits, the barangay road has been noted to have split up.





*Photo 2. The 3-storey pension house that collapsed in the town of Kananga. (Photo by Margarito Costelo)*



*Photo 3. Big cracks are seen on a barangay road in Danay, Ormoc City (Photo by Reniel Lero)*

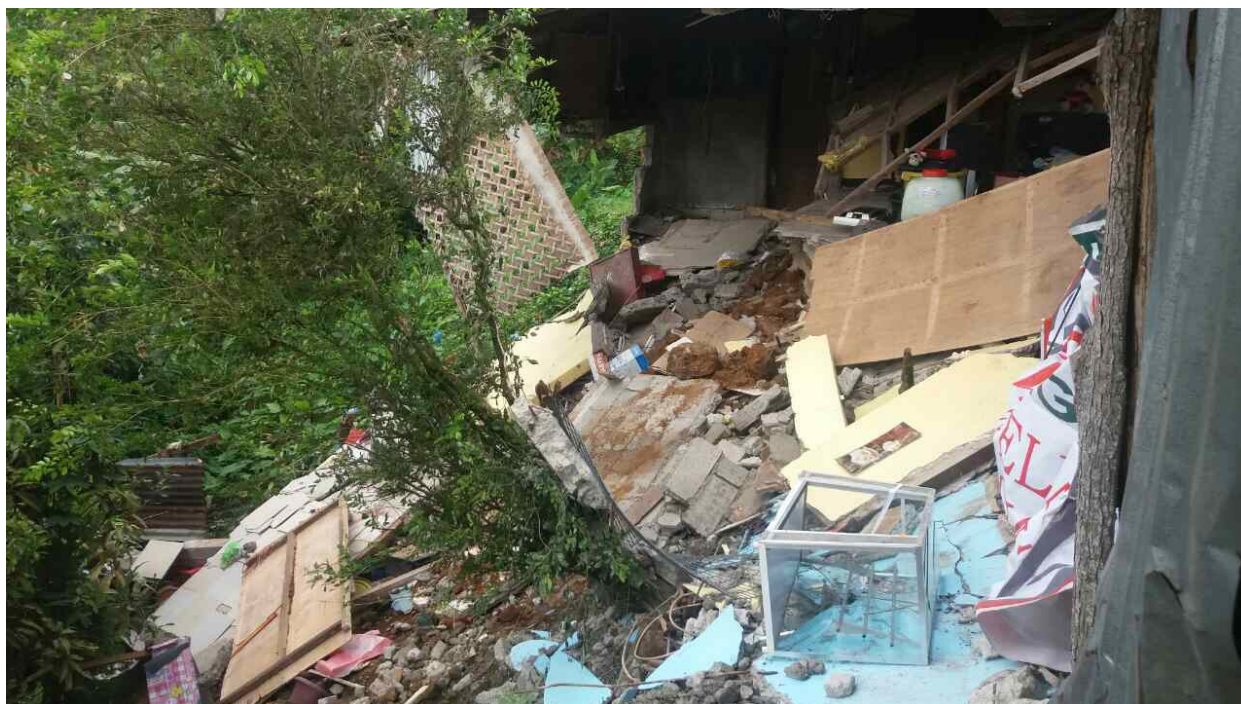


Photo 4. Damaged house in Brgy. Danao, Ormoc City. (Photo by: LCDE)

Table 1. Residences Damaged

Barangay/Town	Damage Incurred	# of Households
Caban-onan, Ormoc City	Totally damaged	50
	Partially damaged	18
Gaas, Ormoc City	Totally damaged	30
Tongonan, Ormoc City	Total and partial damage	579
Milagro, Ormoc City	Total and partial damage	300
Danao, Ormoc City	Inhabitable/severely damaged	347

Table 2. Deaths & Injuries

Location	Deaths	Injuries
Gaas, Ormoc City	0	2
Poblacion, Kananga	1	12-15
Cabaon-an, Ormoc City	1	11
Tongonan, Ormoc City	0	13
Cabintan, Ormoc City	0	3
Danao, Ormoc City	0	3





*Photo 5. A family camps out on the open space near their collapsed house in Ormoc City. (Photo by LCDE)*

Widespread power outage is being experienced by the island because the main source of power, the Tongonan Geothermal Power Plant suffered extensive damage. The provinces of Samar, Cebu and Bohol are also suffering blackouts because they also sourced their power from Leyte. The Tagbilaran City DRRMO is conducting water rationing as their water districts have also lost power.

Apart from cracked concrete roads in the affected upland barangays, the transport system in Northern Leyte is fully functional, including the Tacloban domestic airport. While there are no reports of severely-damaged schoolbuildings, local officials have declared suspension of classes.

## **HUMANITARIAN RESPONSE**

The Department of Social Welfare and Development (DSWD) along with the Office of Civil Defense has responded along with the LGUs and MDRRMOs of the affected municipalities. Ormoc City Mayor Richard Gomez was quoted in an interview with CNN Philippines that the LGU has already responded with shelter kits and food relief packs.

## RELIEF REQUESTED

According to initial damage and needs assessment by the LCDE teams and other local NGOs, the most needed are food and shelter intervention. Table 3 lists what the relief items needed.

*Table 3. Needed Relief Items*

<b>Food Items</b>	<b>Non-food Items</b>
Food relief packs	Shelter repair kits
Hot Meals	Sleeping kits
Water	Psychosocial de-briefing

More information is being gathered from the field. This report will be updated as soon as new data is collected and collated.

### *Data Sources:*

1. *DNCA by LCDE*
2. *Rural Development Initiatives of Leyte (RDIL)*
3. *DSWD DREAMB*
4. *LGU DRRMOs*